

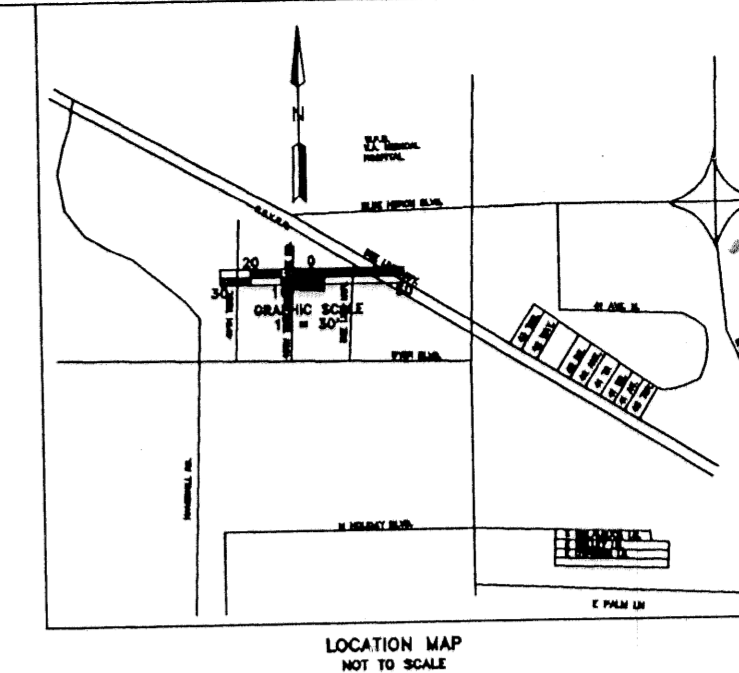
PLAT of THOMAS CONCRETE

BEING A PORTION OF THE SOUTHWEST 1/4 OF SECTION 25, TOWNSHIP 42 SOUTH, RANGE 42 EAST
CITY OF RIVIERA BEACH PALM BEACH COUNTY, FLORIDA

NOVEMBER 1995

SCALE 1" = 30'

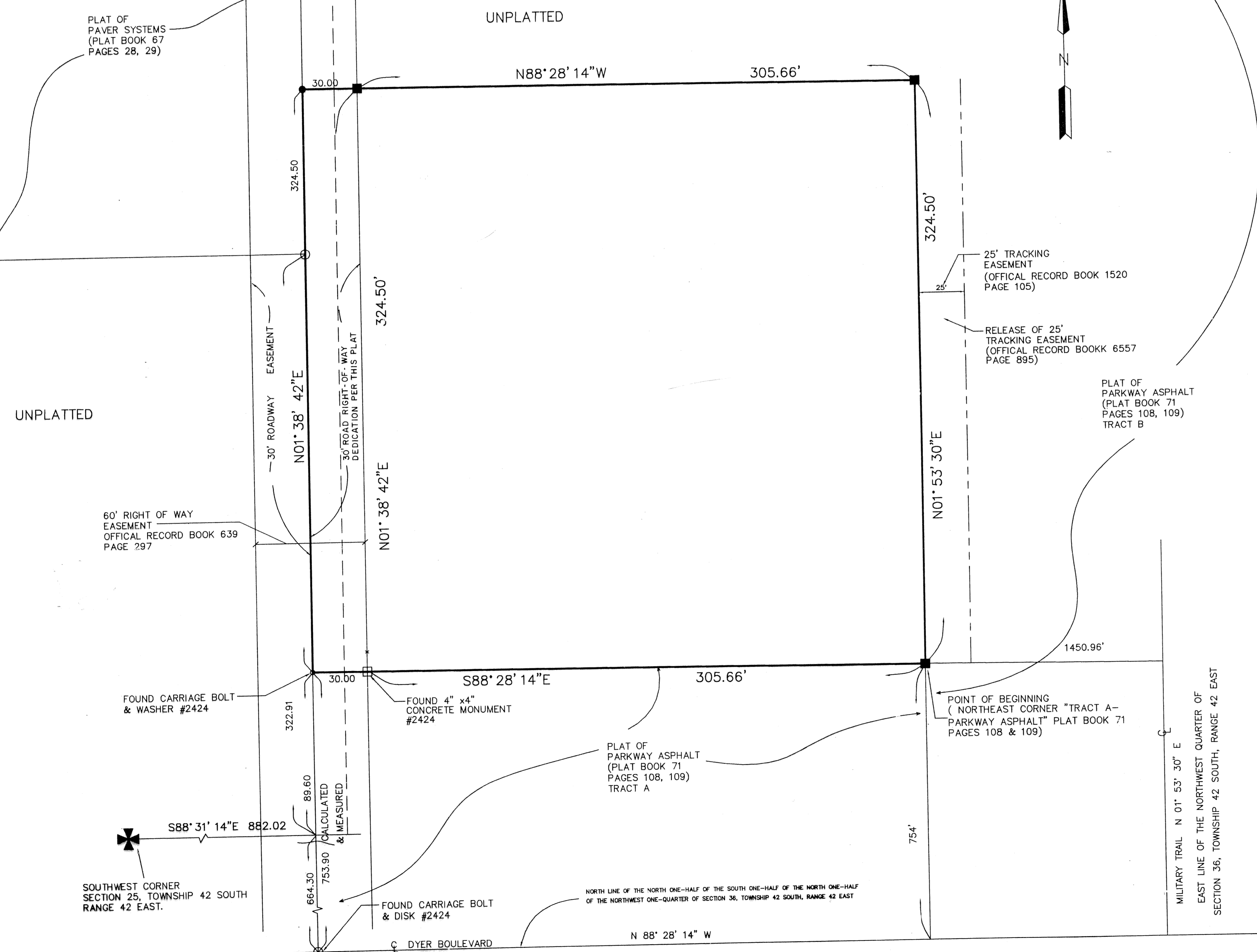
SHEET 2 of 2



78

STATE OF FLORIDA }
COUNTY OF PALM BEACH } SS
THIS PLAT WAS FILED FOR RECORD AT
DAY OF _____, 1995 AND DULY
RECORDED IN PLAT BOOK _____ ON
PAGES _____ THROUGH _____
DOROTHY H. WILKEN
CLERK OF THE CIRCUIT COURT
BY: _____ DEPUTY CLERK

SUBDIVISION # THOMAS CONCRETE
 BOOK 76 PAGE 78
 FLOOD MAP # _____
 ZONING _____
 QUAD # _____
 SE _____
 PUD NAME CITY OF RIVIERA BEACH



LEGEND:

P.C.P.	PERMANENT CONTROL POINT
△	DELTA ANGLE
R	RADIUS
L	ARC LENGTH
⊖	CENTERLINE
42nd	FORTY-SECOND
N	NORTH
S	SOUTH
E	EAST
W	WEST

- SURVEYOR'S NOTES:**
- BEARING SHOWN HEREON ARE REFERENCED ALONG THE SOUTH LINE OF SECTION 25, TOWNSHIP 42 SOUTH, RANGE 42 EAST, PALM BEACH COUNTY, FLORIDA, AS S88°31'43"E.
 - PRM PERMANENT REFERENCE MONUMENT FOUND.
 - PRM PERMANENT REFERENCE MONUMENT SET.
 - PCP PERMANENT CONTROL POINT SET.
 - PCP PERMANENT CONTROL POINT FOUND.
 - LINES WHICH INTERSECT CURVES ARE RADIAL UNLESS OTHERWISE NOTED.
 - INTHOSE INSTANCES WHERE UTILITY/DRAINAGE STRUCTURES ARE CONSTRUCTED IN CONFLICT WITH THE PLATTED PERMANENT CONTROL POINTS (P.C.P.) POSITIONS, STRADDLERS MONUMENTED AS PERMANENT CONTROL POINTS WILL BE SET TO REFERENCE THE PLATTED PERMANENT CONTROL POINT POSITIONS.
 - NOTICE: THERE MAY BE ADDITIONAL RESTRICTIONS, NOT FOUND ON THIS PLAT, THAT MAY BE FOUND IN THE PUBLIC RECORDS OF PALM BEACH COUNTY, FLORIDA.
 - BUILDING SETBACKS SHALL CONFORM TO THE VILLAGE OF NORTH PALM BEACH DEVELOPMENT CODE.
 - THERE SHALL BE NO BUILDINGS, STRUCTURES, CONSTRUCTION OF ANY KIND, TREE OR SHRUBS PLACED ON THE EASEMENTS, AS SHOWN HEREON.

THIS INSTRUMENT PREPARED BY:
RICHARD M. JACKSON,
PROFESSIONAL SURVEYOR & MAPPER,
IN & FOR THE OFFICE OF:

JAMES E. NEUHAUS, INC.,
11911 U.S. HIGHWAY ONE, SUITE 120
PALM BEACH GARDENS, FLORIDA 33408
(407) 622-1300

JAMES E. NEUHAUS, Inc.
Consulting Engineers, Surveyors, Planners
11911 U.S. Highway One, Suite 120 Palm Beach Gardens, Florida 33408 Tel. 407/622-1300

PLAT of
THOMAS CONCRETE

DWN: RMJ	F.B.: N/A	P.G.: N/A	DATE: 10/18/95
CRD: RMJ	FILE: 95-093	SCALE: SEE GRAPHIC	SHEET: 2 OF 2